



**PROGRAM STUDI S1
SOSIOLOGI**

Portofolio Mata Kuliah

Ver/Rev

1/2

Halaman

1/11

1. Course Identity

Course Name	Sociology of Plantation Societies		
Faculty	Social and Political Sciences	Program	Sociology
Course Code	SOS4104	Semester Credit Unit	3 SKS (4,8 ESCT)
Group	Sociology Program	Nature of Retrieval	Required
Semester	4	Offline Media	Laptop, Projector, whiteboard, markers
Methods	Classical	Online Media	Platform (e-learning, zoom, google meet)
Course Family	Social Sciences	Pre-requisites	-
Course Coordinator	Drs. T. Ilham Saladin, MSP	Lecturers	Drs. T. Ilham Saladin, MSP Rahman Malik, S.Sos., M.Sos

2. Learning Outcomes

PEO Codes	Program Educational Objectives (PEO)	ILO Codes	Intended Learning Outcome (ILO)	Performance Indicator	Assessment/ Rating/ Measurement/ Evaluation	Weight (%)
1	Students are able to conduct critical analysis to solve social and development problems with sociological perspective phenomena as input for making social policies by utilizing science and technology in making technical reports and quantitative and qualitative data analysis using STATA, NVIVO, SEM, UCINET, social mapping drones, and	ILO-01	Students are able to critically examine social problems and the implications of the development or implementation of science from a sociological perspective.	Students are able to explain the development of social theory and theory of change critically in solving social problems.	1. Presentation 2. Written Test (Midterm Exam) 3. Written Test (End of Semester Exam) 4. Oral Test (Group Assignment) Total	ILO ILO01: 20% ILO02: 20% ILO03: 30% ILO04: 30% 100%
		ILO-02	Students are able to analyze various social problems by providing recommendations for social policies in society	Students are able to analyze various social problems by providing appropriate recommendations for social policies in the community.		



**PROGRAM STUDI S1
SOSIOLOGI**

Portofolio Mata Kuliah

Ver/Rev

1/2

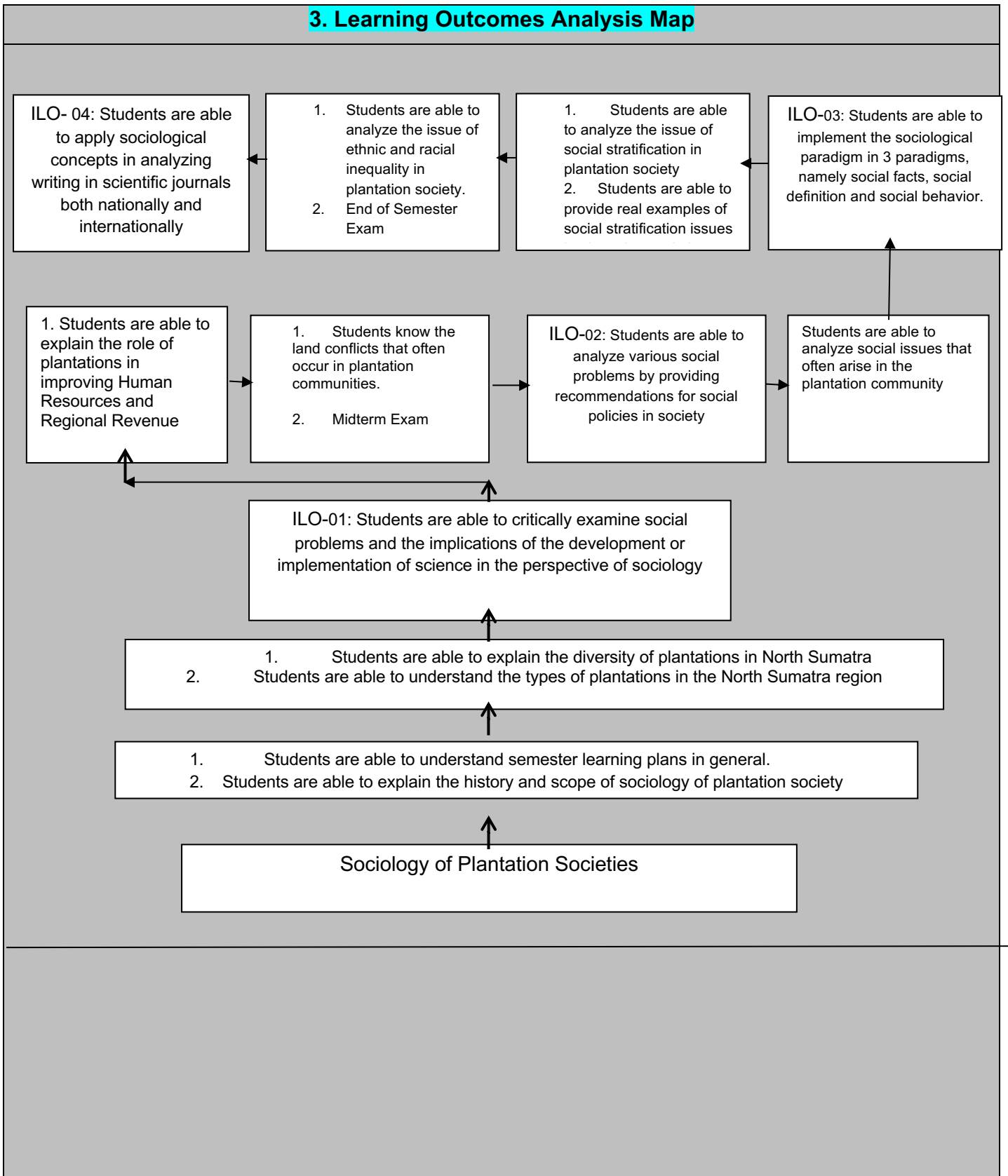
Halaman

2/11

	SPSS software.					
2	Students are able to compile a scientific description of the results of a study in the field of sociology in the form of a thesis or final project report and upload it on the college website by showing independent performance, resilience, and integrity so as to produce quality researchers, measurable research competence, and avoid plagiarism.	ILO-03	Students are able to implement the sociological paradigm in 3 paradigms, namely social facts, social definition and social behavior.	Students can design research and empowerment using the paradigm of social facts, social definition and social behavior.		
		ILO-04	Students are able to apply sociological concepts in analyzing writing in scientific journals both nationally and internationally	Students can produce detailed and in-depth research reports in accordance with the sociological perspective in accordance with the rules of writing national and international scientific journals.		



3. Learning Outcomes Analysis Map





**PROGRAM STUDI S1
SOSIOLOGI**

Portofolio Mata Kuliah

Ver/Rev

1/2

Halaman

4/11



**PROGRAM STUDI S1
SOSIOLOGI**

Portofolio Mata Kuliah

Ver/Rev

1/2

Halaman

5/11

4. Course Syllabus

Brief Course Synopsis/Description	This course discusses societal changes concerning the development of plantations in Indonesia. The course mainly focuses on how sociological approaches identify socio-economic conditions and explain the impact of plantation development on plantation communities in Indonesia. The course will also discuss stratification in plantation communities, including plantation community conflicts in land use and land conflicts around plantation communities.
Learning Materials	<ol style="list-style-type: none">1. History of Plantation Entrance in Indonesia2. Multicultural and Plantation in North Sumatra3. The Role of Plantations in Increasing Regional Income (North Sumatra)4. Land Conflict in Plantation5. Social Issues in Plantation Communities6. Social Stratification Issues and Plantation Society7. Ethnic and Racial Inequality Issues in Plantation Society

5. Learning Experiences and References

Learning Experiences	In this course, students gain learning experience through the following activities: <ol style="list-style-type: none">1. Lectures2. Assistance outside of class hours3. Problem-Solving Exercise4. Quiz for each ILO
References	Main: <ol style="list-style-type: none">1. Afrizal dan Indrizal, 2010. Manajemen Konflik Perkebunan Kelapa Sawit. Andalas University Padang.2. Mosher A.T. 1997. Menggerakkan dan Membangun Pertanian. Yasaguna. Jakarta.3. Arifin Bustanil. 2004. Analisis Ekonomi Pertanian Indonesia. Jakarta. Kompas.4. Barth, Fredrick. 1988. Kelompok Etnik dan batasannya. Jakarta: Universitas Indonesia. Supporting: <ol style="list-style-type: none">1. Fitriani, Cici. 2014. Jurnal: Interaksi Sosial Transmigran Jawa Dengan Masyarakat Lokal Di Desa Kayuagung: E Journal Tadulako UNTAD.



**PROGRAM STUDI S1
SOSIOLOGI**

Portofolio Mata Kuliah

Ver/Rev

1/2

Halaman

6/11

6. Semester Learning Plan

Week	Sub-ILO as Expected End Capabilities	Learning Materials	Assessment Criteria (Indicators)	Form of Assessment	Learning Forms and Method	Learning Activities/Student Experiences	Assessment Weight
(1)	(2)	(3)	(4)	(5)	(6)	(7)	(8)
1	Sub-ILO1: After attending this lecture, students will be able to: <ul style="list-style-type: none"> Students are able to understand the semester learning plan in general 	<ul style="list-style-type: none"> Semester Learning Plan and Learning Contract General introduction to the sociology of plantation society 	1. Presentation 2. Written Test (Midterm) 3. Written Test (Endterm) 4. Group Assignment	Written Test	Lecture, Group Presentation, Discussion	Questions and Answers (QnA)	20 %
2	Sub- ILO2-3: After attending this lecture, students will be able to: <ul style="list-style-type: none"> Explain the history and scope of the sociology of plantation societies 	<ul style="list-style-type: none"> History of Plantation Entrance in Indonesia 		Presentation	Lecture, Group Presentation, Discussion	<i>Teamwork</i> <i>Critical thinking</i> <i>Problem solving</i>	
3,4	Sub- ILO3-4: After attending this lecture, students will be able to: <ul style="list-style-type: none"> Able to explain the diversity of plantations in North Sumatra Able to understand the types of plantations that exist in the North Sumatra region 	<ul style="list-style-type: none"> Multiculturalism and Plantation in North Sumatra 		Written Test	Lecture, Group Presentation, Discussion	Questions and Answers (QnA)	20%



**PROGRAM STUDI S1
SOSIOLOGI**

Portofolio Mata Kuliah

Ver/Rev

1/2

Halaman

7/11

5,6	<p>After attending this lecture, students will be able to:</p> <ul style="list-style-type: none"> • Able to explain the role of plantations in improving Human Resources and Regional Revenue • Understand the land conflicts that often occur in plantation communities • Recognize land conflicts in plantation communities, especially North Sumatra plantations. 	<ul style="list-style-type: none"> • The Role of Plantations in Increasing Regional Income (North Sumatra) • Land Conflict in Plantation 		Presentation	Lecture, Group Presentation, Discussion	<i>Teamwork Critical thinking Problem solving</i>	
7	Mid-Semester Exam: Assessment, Evaluation and Improvement of the Next Learning Process 40 %						
8-9	<p>After attending this lecture, students will be able to:</p> <ul style="list-style-type: none"> • Able to analyze social issues that often arise in the plantation community 	Social Issues in Plantation Communities		Presentation	Lecture, Group Presentation, Discussion	<i>Teamwork Critical thinking Problem solving</i>	30%
10-12	<p>After attending this lecture, students will be able to:</p> <ul style="list-style-type: none"> • Able to analyze the issue of social stratification in plantation society • Able to provide real examples of social stratification 	Issues of Social Stratification and Plantation Communities		Written Test	Lecture, Group Presentation, Discussion	Questions and Answers (QnA)	



**PROGRAM STUDI S1
SOSIOLOGI**

Portofolio Mata Kuliah

Ver/Rev

1/2

Halaman

8/11

	issues in plantation society						
13-15	<p>After attending this lecture, students will be able to:</p> <ul style="list-style-type: none"> Able to analyze the issue of ethnic and racial inequality in plantation society 	Issues of Ethnic and Racial Inequality in Plantation Society	<ol style="list-style-type: none"> 1. Presentati on 2. Written Test (Midterm) 3. Written Test (Endterm) 4. Group Assignment 	Written Test	Lecture, Group Presentation, Discussion	Questions and Answers (QnA)	30%
16	End of Semester Evaluation: Validating Final Assessment and Determining Student Graduation						60 %



7. Assessment

Assessment Rubric

Assessment criteria based on the absolute learning outcome system, with the following Assessment Rubric:
a). ILO 1

No	ILO 01	Assessment			
		1	2	3	4
		Not Capable (≤59)	Quite Capable (60-69)	Capable (70-79)	Highly Capable (≥80)
1	Students are able to critically examine social problems and the implications of the development or implementation of science from a sociological perspective.	Students are unable to critically analyze social problems and the implications of the development or implementation of science from a sociological perspective.	Students are sufficiently able to critically examine social problems and the implications of the development or implementation of science from a sociological perspective.	Students are able to critically examine social problems and the implications of the development or implementation of science from a sociological perspective.	Students are highly capable to critically analyze social problems and the implications of the development or implementation of science from a sociological perspective.

b). ILO 1

No.	ILO-02	Assessment			
		1	2	3	4
		Not Capable (≤59)	Quite Capable (60-69)	Capable (70-79)	Highly Capable (≥80)
1	Students are able to analyze various social problems by providing recommendations for social policies in society.	Students are not able to analyze various social problems by providing recommendations for social policies in society.	Students are sufficiently able to analyze various social problems by providing recommendations for social policies in society.	Students are able to analyze various social problems by providing recommendations for social policies in society.	Students are highly capable of analyzing various social problems by providing recommendations for social policies in society.

ILO 2

No.	ILO -03	Assessment			
		1	2	3	4
		Not Capable (≤59)	Quite Capable (60-69)	Capable (70-79)	Highly Capable (≥80)
1	Students are able to implement the sociological paradigm in 3 paradigms,	Students are unable to implement the sociological paradigm in 3 paradigms, namely social facts, social	Students are sufficiently able to implement the sociological paradigm in 3 paradigms, namely social facts, social	Students are able to implement the sociological paradigm in 3 paradigms, namely social facts, social definition and social behavior.	Students are high capable of implementing the sociological paradigm in 3 paradigms, namel



**PROGRAM STUDI S1
SOSIOLOGI**

Portofolio Mata Kuliah

Ver/Rev

1/2

Halaman

10/11

namely social facts, social definition and social behavior.

definition and social behavior.

definition and social behavior.

social facts, social definition and social behavior.

ILO 2

No.	ILO -04	Assessment			
		1	2	3	4
		Not Capable (≤59)	Quite Capable (60-69)	Capable (70-79)	Highly Capable (≥80)
1	Students are able to apply sociological concepts in analyzing writing in scientific journals both nationally and internationally	Students are unable to apply sociological concepts in analyzing writing in national and international scientific journals.	Students are sufficiently able to apply sociological concepts in analyzing writing in national and international scientific journals.	Students are able to apply sociological concepts in analyzing writing in scientific journals both nationally and internationally	Students are very capable of applying sociological concepts in analyzing writing in national and international scientific journals.

Range

The scoring system uses PAP (Penilaian Acuan Patokan/ Benchmark Assessment), an absolute assessment, the following components and letter grade ranges:

No.	Score Range	Grades
1	00,00 s.d 49,99	E
2	50,00 s.d 59,99	D
3	60,00 s.d 64,99	C
4	65,00 s.d 69,99	C+
5	70,00 s.d 74,99	B
6	75,00 s.d 79,99	B+
7	80,00 s.d 100,00	A

Evaluation System

Students are declared to have passed (received a minimum letter grade of C) only if each ILO has a numerical value equal to or greater than 60 (≥ 60).
 If one or more of the ILO scores are less than 60 (< 60), but the weighted score is equal to or greater than 60 (≥ 60) then it is expected to take a measurement exam for the unmet ILO.
 If the weighted score is smaller than 60 (<60), students are required to repeat the entire course (all ILO).
 Student participation in this course is declared forfeited if attendance is less than 80% (< 80%) or less than 11) student attendance, or cheating..

Tanggal :

Diketahui Oleh,
Komting Mata Kuliah

Disahkan oleh,
**Ketua Program Studi
Sosiologi**

Disiapkan oleh,
Koordinator Mata Kuliah



**PROGRAM STUDI S1
SOSIOLOGI**

Portofolio Mata Kuliah

Ver/Rev

1/2

Halaman

11/11

Drs. T. Ilham Saladin, MSP

Drs. T. Ilham Saladin, MS